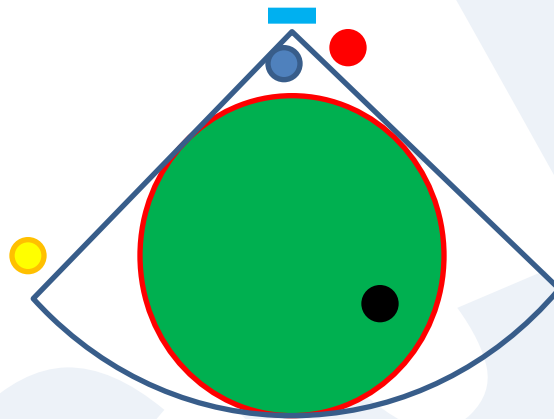


- Ben Rothman calls the target area the “Golden Triangle.”
- The Golden Triangle (GT) is the area where your ball needs to be for you to have a high percentage chance of making the wicket on your next turn.



Notice that Blue and Black are in the GT and can score on their next shot. Although Red is very close to the hoop, the angle is too great to score. Yellow has a bad angle also.

Important: the size of the GT is relative to the player. A beginner’s GT may be just 2-3 feet; an intermediate player’s 6-9 feet long; world class player’s GT extends 21 feet or more.